

Our Board

Michael Rourke

Chair & Member of Governance and People Committee



Michael is a member of the Royal Institution of Chartered Surveyors and has worked in the construction industry for over 40 years.

He is currently the Director of Development

and Sales for a London Registered Provider and has worked in the social housing sector for the past 5 years.

James Smith

Vice Chair and Chair of Audit and Risk Committee



James grew up in West Wickham training as a chartered accountant with a firm in Bromley. His first professional involvement with Glebe was as one of the

Association's auditors in the late 1980s. James re-joined the Board in 2020 having taken early retirement from a commercial role in the rail industry.

Laura Beales (on sabbatical)

Vice Chair Audit and Risk Committee



Laura graduated from Bristol University and then began her career at KPMG where she stayed for six years and became ACA qualified. Laura has

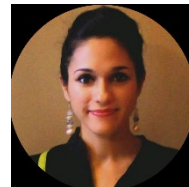
Worked in audit (internal and external), financial consultancy as well as an in-house accountant.

Laura recently co-founded her own company (Tally Market) where she acts as COO and oversees all financial and operational aspects of the business.

Laura has a wide range of experience including risk, governance and control, financial and operational process design.

Sobia Sheikh

Audit and Risk Committee Member



Sobia graduated with degree in Economics and has 15 years' experience working as a risk professional in the UK and abroad. Her experience

spans various sectors including oil and gas, transportation, infrastructure, health, real estate and defence. Sobia has experience in a wide range of areas such as risk, governance, project management and operational efficiency.

Nic Martin

Audit and Risk Committee Member



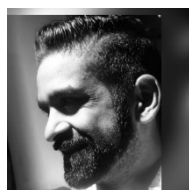
Nic has over 30 years' experience in the financial services industry having worked in large banks and start-ups in Asia, Europe, and the Middle East. Nic has held a range of Executive and Non-

Executive Board positions in both financial services and other industries, as well as being a trustee of several charities.

Nic holds an MBA from Insead and brings extensive expertise in governance, risk management, financial planning, budget control, and compliance having been approved as an Executive Director of several regulated UK financial institutions.

Jinal Shah

Board Co optee



Jinal graduated from Manchester University with a degree in Economics. He started his career at BDO as an auditor with a wide array of cross-sector experience

including Housing Associations and Financial Services. After qualifying as a Chartered Accountant, Jinal moved to pursue a career in Financial Services where he has spent over 20 years working in various roles within Finance (FP&A and Strategy being a specialism), COO and more recently Risk & Control.

Finlay Curror

Chair Governance and People Committee



Fin has worked in a variety of sectors over the past 25 years of his working career. He began his career in the Royal Marines where he was involved in operations

in Iraq, the arctic and at sea. Since leaving the Marines, he has worked in high-end construction and technology services in the UK, Australia and Hong Kong and in the last 15 years, has been working at the executive level within the risk division of several large investment banks.

Perry Davies

Member of Governance and People Committee



Perry grew up in south London and, having joined a diamond company straight from school, he spent thirty years working for De Beers in several production, admin and HR

roles in several countries in Europe and southern Africa. More recently, following a few years with a City brokerage, Perry spent twelve years as Services Manager with a London-based Housing Association. His experience includes HR, process control, services, policy and governance disciplines.